

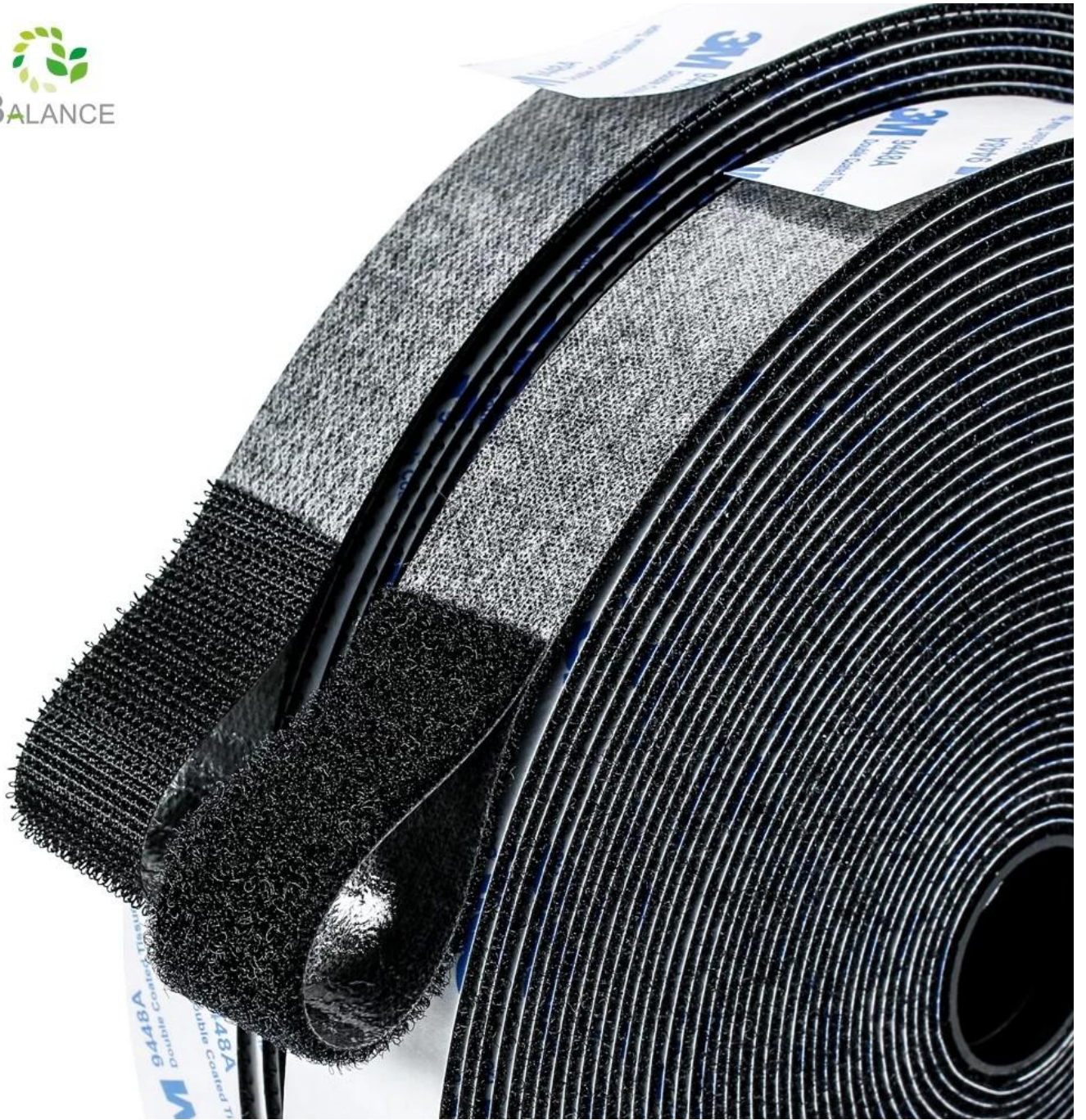
Fita adesiva de velcro

Detalhes do produto

Nome do Produto	Fita adesiva de velcro
Material	Poliéster/Nylon
Cor	Preto
Largura	16mm,20mm,25mm,30mm,38mm
Comprimento	Personalizado em múltiplos de 25 metros
Pacote	25m/rolo a granel ou pacote personalizado
Quantidade mínima	Aceite pedidos pequenos
Amostra	Disponível

Esta tira de velcro autoadesiva revestida com fita dupla face 9448A resistente. O prendedor de gancho especial em forma de J corresponde à fita de laço de alta densidade terá uma resistência de travamento muito forte que não é fácil de cair após a aplicação. A fita autoadesiva pode ser usada de várias maneiras em casa, na escola ou no escritório, uso industrial, diariamente aplique fita preta em uma superfície lisa, como madeira, plástico, vidro, etc., usando mais área de superfície para máxima adesão. Como fabricante de rolos adesivos de velcro na China, nossa visão é que a boa qualidade do produto pode trazer uma boa experiência aos clientes.



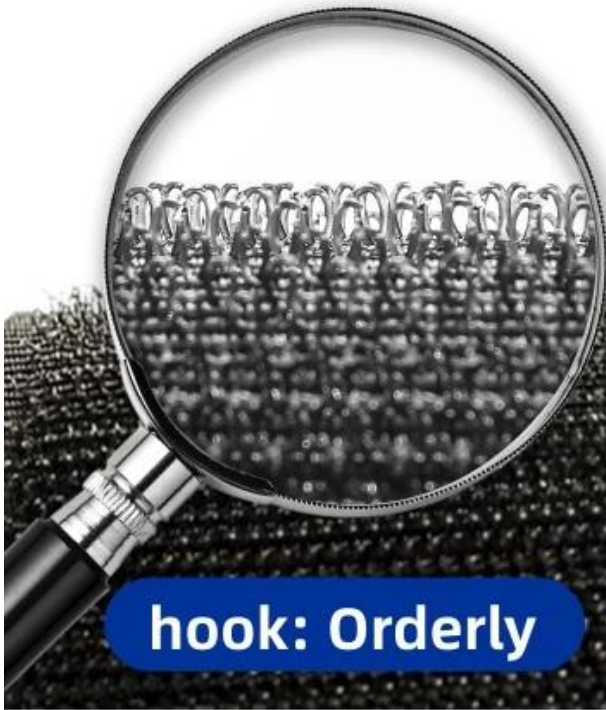




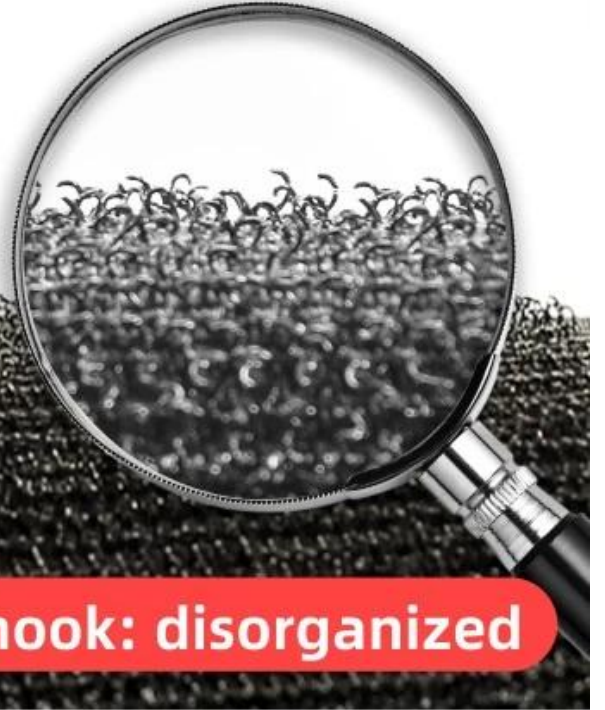
BE A SMART CUSTOMER

Our products

Other Supplier



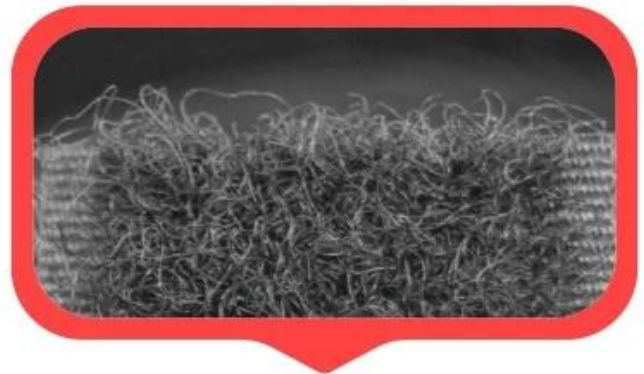
hook: Orderly



hook: disorganized



Loop: Dense and thick



Loop: Sparse and messy



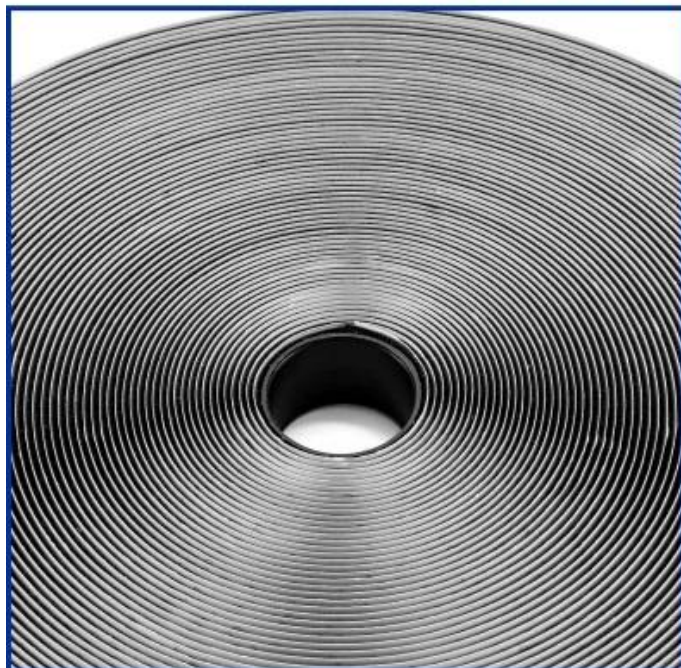


Both of them are Grade B hook and loop But pull test can be shown their differnt

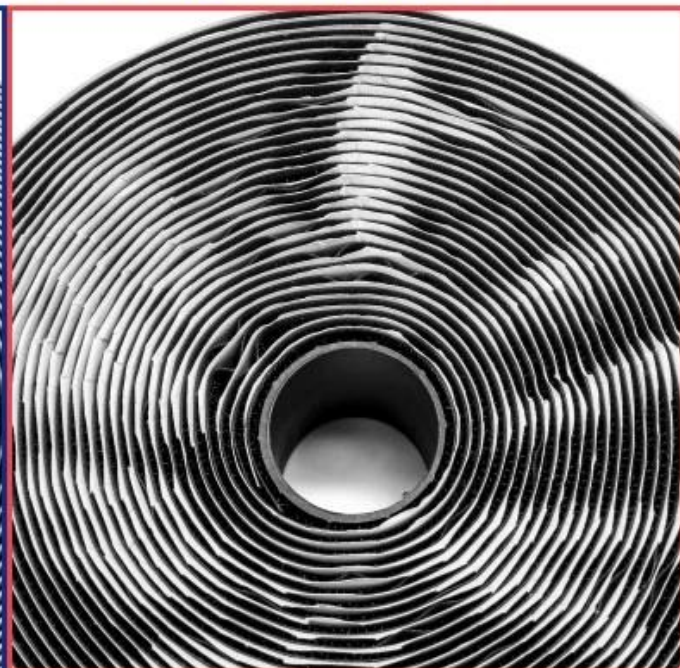
After more than 100 times close and open, our hook and loop tape still keep the same. Because both hook and loop surface are nylon.

Antoher loop surfaces have been pulled apart, which greatly reduces the adhesion, because only the hook surface is nylon.

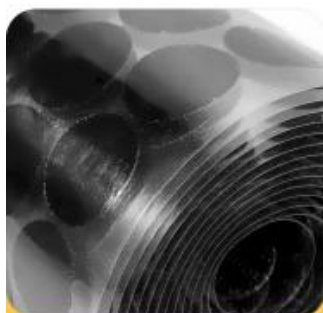
GOOD QUALITY PRODUCTS ALSO WITH GOOD ACCESSORIES



We used release paper in 120g thick and not easy to break



Other supplier used 100g or 80g it's easy to rot and deform



PET release film



PE release film



Single side silicon coated paper



Grashen release paper

ACCEPT CUSTOMIZE SHAPE AND COLOR FOR HOOK AND LOOP TAPE



PRODUCT USAGE



Sofa



Curtain



Window screen



Photo wall



Lamps



Car



Grinding machine



Fish tank brush



Cleaning appliances



helmet

PURCHASE NOTICE



Width	QTY/CTN		Dimensions & Gross Weight
	Roll/CTN	M/CTM	
16mm	60R	1500M	52x27x57 About 17kg/carton
20mm	48R	1200M	
25mm	40R	1000M	
30mm	32R	800M	
38mm	24R	600M	
50mm	20R	500M	
100mm	10R	250M	
110mm	10R	250M	

Packaging style



bulk packing



Paper card



Polybag

DO NOT USE IN THESE SURFACE



Wall of Dust



Rough wall



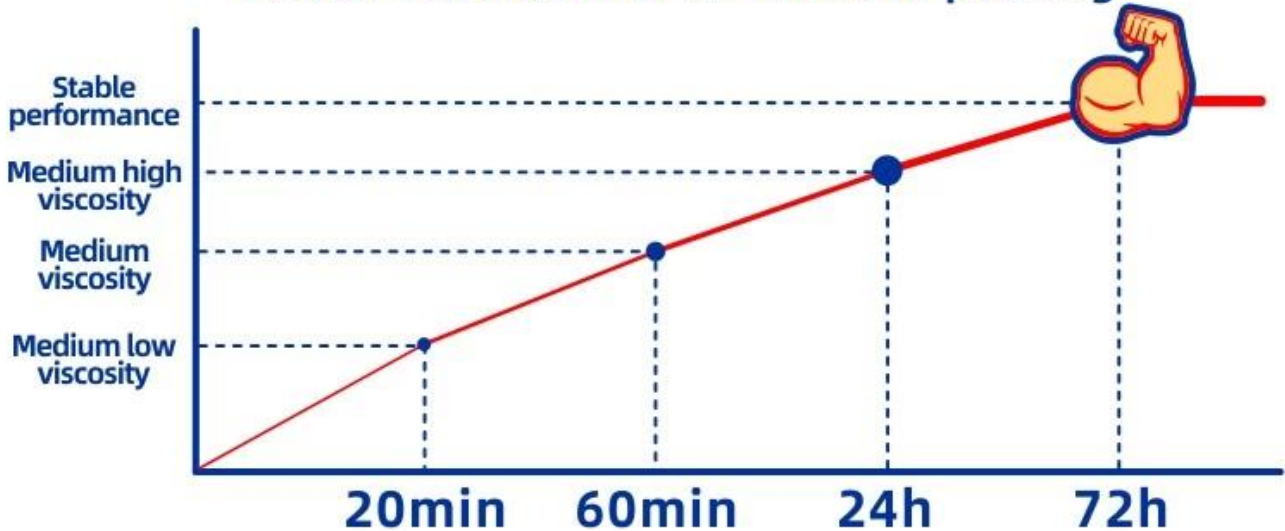
Rubber / silicone gel type



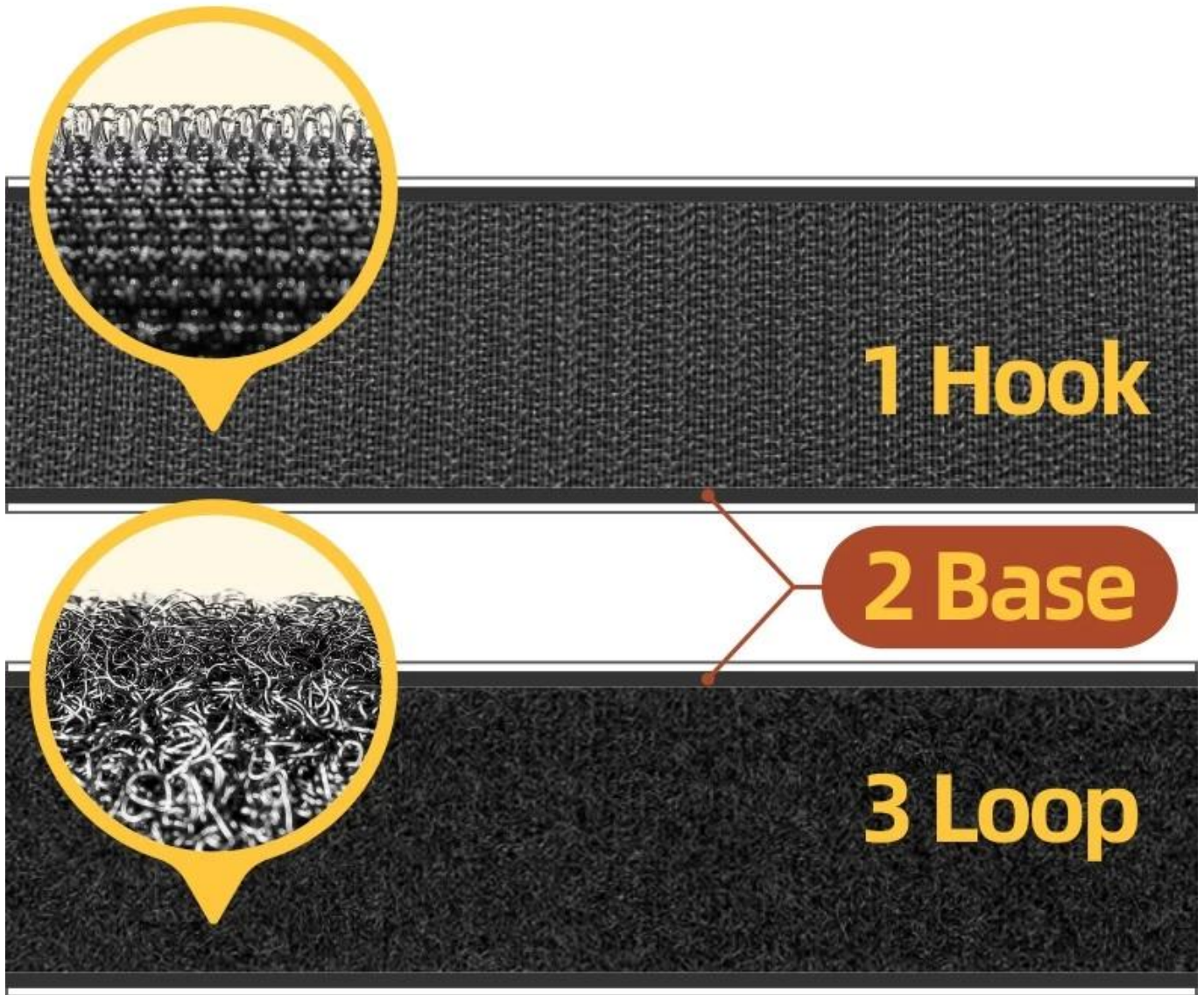
Lychee Leather

TIPS

Better results after 72 hours of pasting



Material selection



Quality	Grade A	Grade B	Grade C	Grade D
Material	1, 2, 3 Nylon	1, 3 Nylon	1 Nylon	1, 2, 3 Polyester
Peeling Strength	Strong	Great	General	Poor
Durability	Strong	Great	General	Poor
Texture	Strong	Great	General	Poor
Paste times	Most	Great	General	Less

Other customization

Structural characteristics



Sew-on hook



Sew-on loop



Un-napped Loop



Soft fabric loop



injection hook



mushroom hook



hook loop in same side



2 in 1 hook and loop tape

Hook and loop strap

Back-to-back rolls

Back-to-back tie

Buckle strap

Elastic buckle strap



We have 5000m²factory, our own factory
The REAL STRENGTH is to show the true face to you





Strict certification testing provides quality guarantee and **WORRY-FREE EXPORT**



We have achieved some inspection certification, such as ISO9001:2015, BSCI, SGS, TUV, etc. and have won the title of "Guangdong Province Credible Enterprise" for three consecutive years. In addition, we have obtained over 20 product patents and trademark, as well as 5 patent evaluation reports. A series of quality inspection reports provide quality guarantee and worry-free export.

CONTACT INFORMATION

TEL : +86 20 34992808
+86 18026363923
Web : www.homecommoditysupplier.com
E-mail : sales02@balance-china.com
Address : No.2 Shengyuan Street, Beiliu Ind Park, Dagang Town,
Nansha District, Guangzhou, Guangdong, China
Zip code: 511470