

Colorful Small Pet ID Puppy Kitten Adjustable Necklace Collars

Product Description

Whelping Collar are made from strips of soft fabric wrap-around and are easy to adjust as the puppy or kitten grows. These are designed to aid the discerning breeder to identify each newborn puppy or kitten from birth until the time they leave for their forever home. They are of particular help when littermates are identical looking to each other and have no distinguishing markings or coat colours.

Product name	Dog ID Collar
Material	PP+polyester
Size	S:10*160mm, M:10*230mm, L:10*350mm, XL:10*400mm
Package	Opp bag,or other customized
MOQ	25 sets
Sample	Available



PUPPY ID COLLAR

Both cats and dogs can be used

Multicolor selection

12 pcs / pack

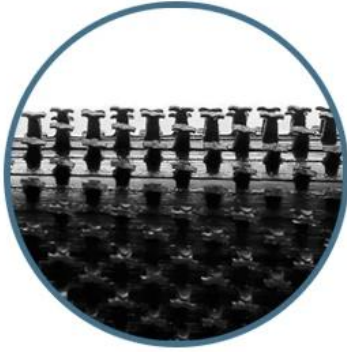




MULTI-COLOR SELECTION

MARK MORE PUPPIES

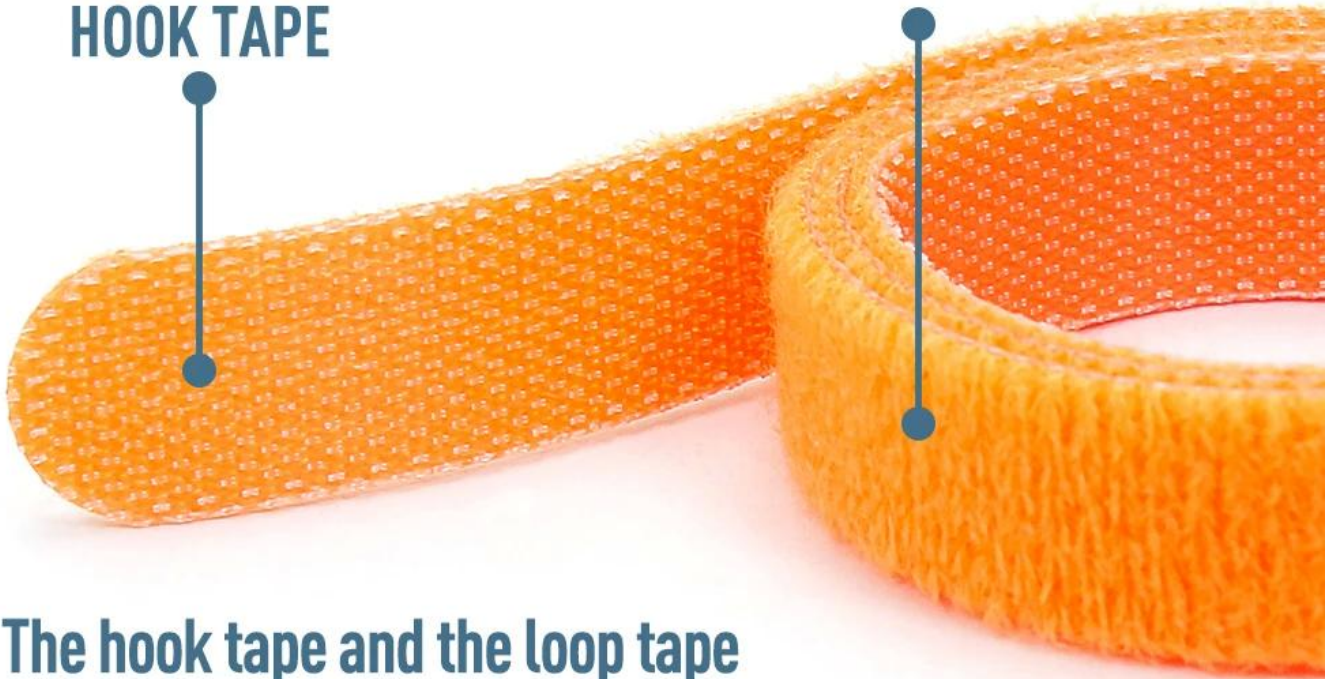




HOOK TAPE



LOOP TAPE



The hook tape and the loop tape are bonded to each other, which has strong adhesion and is not easy to fall off

FREE CUTTING COMFORTABLE TO WEAR

You can adjust the size of the collar as your pet grows



PRODUCT USAGE

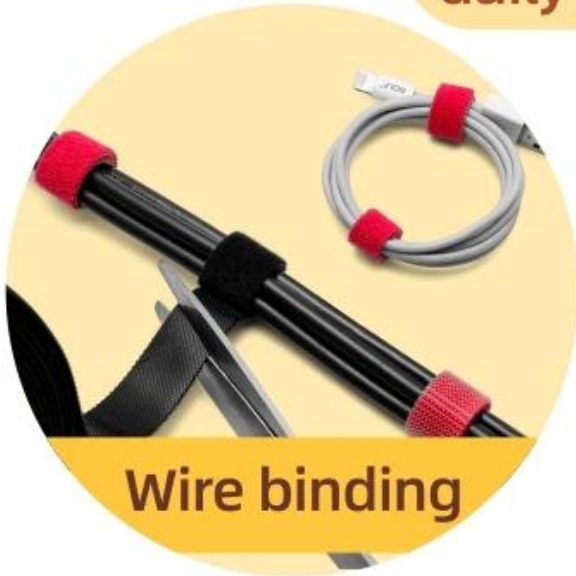


Suitable for most pets such as puppies, kittens, etc



Suitable for identification of newborn pets

It can also be used for daily goods arrangement, ect



Wire binding



Household storage



Book arrangement



Plant tidying

TIPS

Make sure to check the tightness of the collar regularly so that it is too loose or too tight.

(Reserving a comfortable space for one or two fingers)



CONTACT INFORMATION

TEL : +86 20 34992808
+86 18026363932

Web : www.homecommoditysupplier.com

E-mail : sales02@balance-china.com

Address : Address: No. 2 Shengyuan Street, Beiliu Ind Park, Dagang Town
Nansha District, Guangzhou City, Guangdong Province, China

Zip code : 511470

广州市贝恩日用制品有限公司
GUANGZHOU BALANCE DAILY COMMODITIES CO., LTD.