

You konw that?

There is **GOOD VISCOUS FORCE** only when the hook tape and loop tape **ATTACH WELL**

hook side



#1 hook



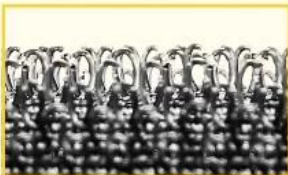
#2 hook



#3 hook



#4 hook



sew-on hook



mushroom hook

loop side



sew-on loop



Polyester loop



160g Soft fabric loop



220g Soft fabric loop



280g Soft fabric loop



360g Soft fabric loop



UBL fabric



soft loop



BACK TO BACK TAPE WITH DIFFERENT VISCOSITY

WE HAVE WHAT YOU WANT!



Have you ever met such problems?



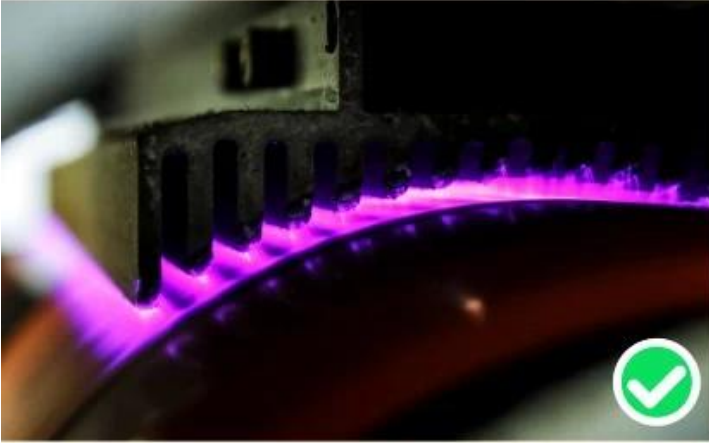
Separation



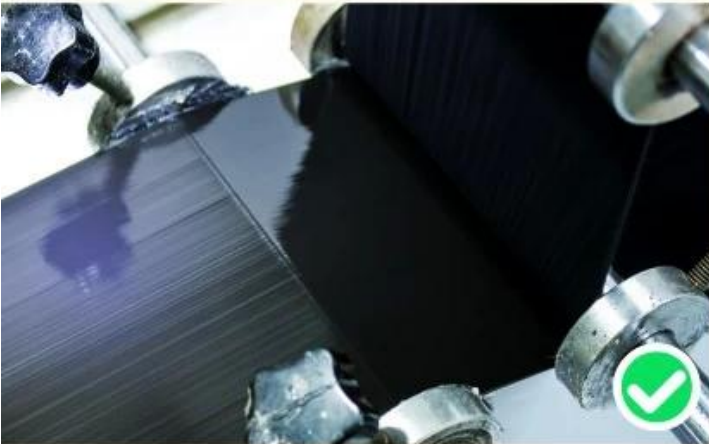
Bubble



Fuzzy



We hit the tapes by 2000V high pressure, making the glue permeate into the tapes to achieve strong viscosity.



High precision equipment pledges even glue.



High-end branded glues are clear, not cloudy.

After Opened and Closed many times

Our Products



Hook and loop almost keep the original

Other Supplier



The loop got loose and the hook has been straightened

Different specifications available



**Custom
LOGO**



**Multiple
color options**



**Freely
cutting**



**Strong
adhesion**

PRODUCT USAGE



Cable tie



Pet ID band



Plant tie



Household organizer



Book sorter



Back to back hook and loop strap in different sizes and shapes





We have 5000m²factory, our own factory
The REAL STRENGTH is to show the true face to you





Strict certification testing provides quality guarantee and **WORRY-FREE EXPORT**



We have achieved some inspection certification, such as ISO9001:2015, BSCI, SGS, TUV, etc. and have won the title of "Guangdong Province Credible Enterprise" for three consecutive years. In addition, we have obtained over 20 product patents and trademark, as well as 5 patent evaluation reports. A series of quality inspection reports provide quality guarantee and worry-free export.

CONTACT INFORMATION

TEL : +86 20 34992808
 +86 18026363923
Web : www.homecommoditysupplier.com
E-mail : sales02@balance-china.com
Address : No.2 Shengyuan Street, Beiliu Ind Park, Dagang Town,
 Nansha District, Guangzhou, Guangdong, China
Zip code: 511470