

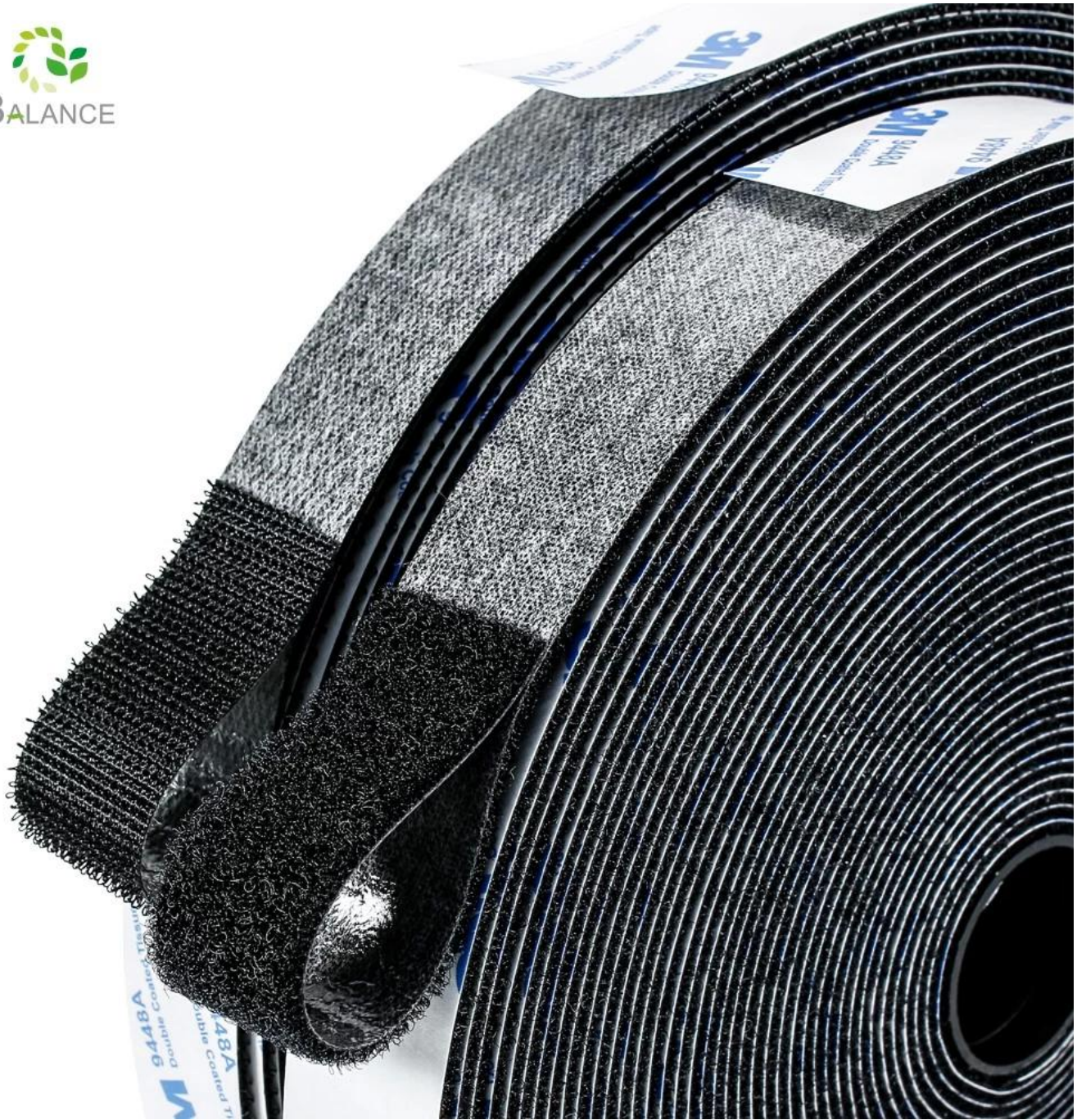
Zelfklevend klittenband

Product detail

Productnaam	Zelfklevend klittenband
Materiaal	Polyester/nylon
Kleur	Zwart
Breedte	16 mm, 20 mm, 25 mm, 30 mm, 38 mm
Lengte	Op maat gemaakt in veelvouden van 25 meter
Pakket	25 m/rol in bulk of op maat gemaakt pakket
MOQ	Accepteer een kleine bestelling
Steekproef	Beschikbaar

Deze zelfklevende klittenbandstrip is voorzien van een robuuste 9448A dubbelzijdige tape. Speciale J-vormige haaksluiting past bij lustape met hoge dichtheid en heeft een zeer sterke slotsterkte die niet gemakkelijk valt na het aanbrengen. De zelfklevende tape kan op vele manieren worden gebruikt thuis, op school of op kantoor, industrieel gebruik, dagelijks gebruik zwarte tape op een glad oppervlak, zoals hout, plastic, glas, enz., gebruik een groter oppervlak voor maximale hechting. Bij de vervaardiging van zelfklevende klittenbandrollen in China is onze visie dat een goede productkwaliteit klanten een goede ervaring kan opleveren.



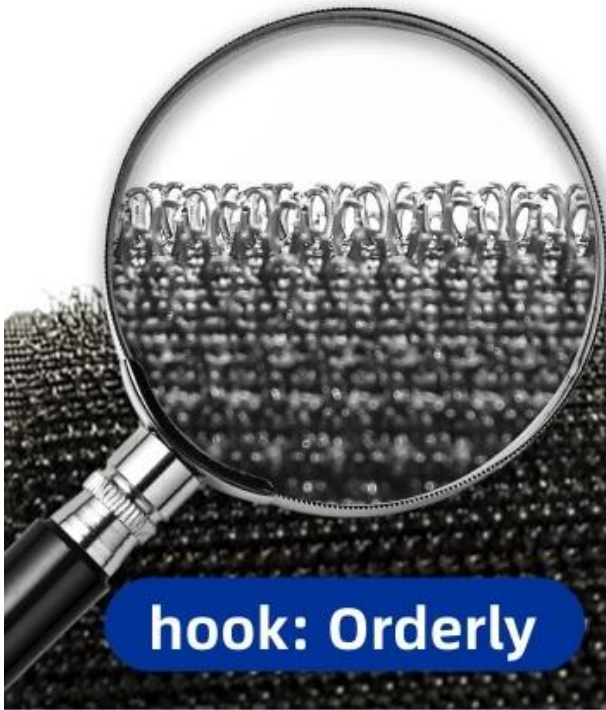




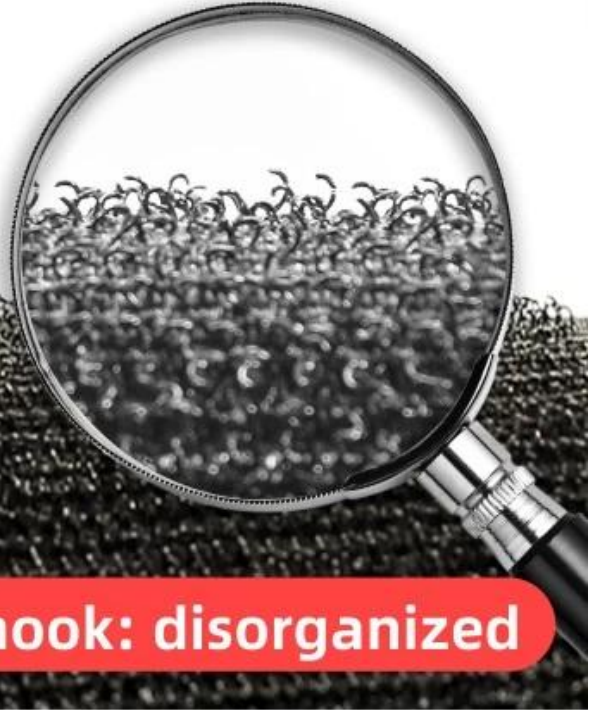
BE A SMART CUSTOMER

Our products

Other Supplier



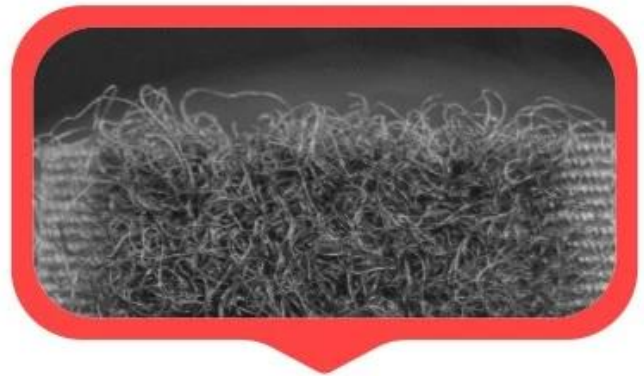
hook: Orderly



hook: disorganized



Loop: Dense and thick



Loop: Sparse and messy



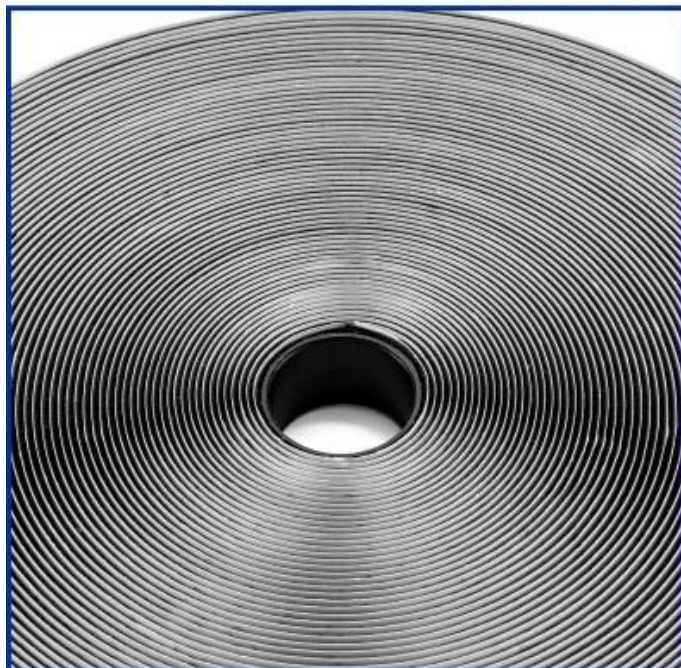


Both of them are Grade B hook and loop But pull test can be shown their differnt

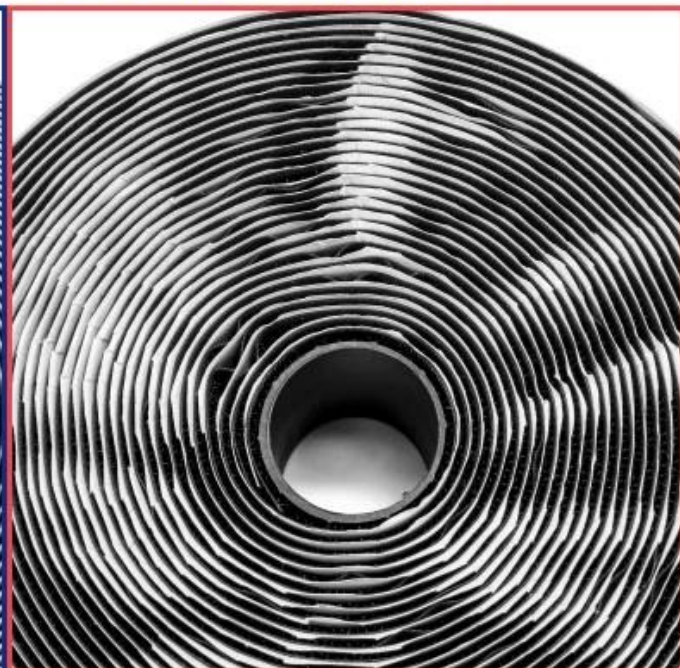
After more than 100 times close and open, our hook and loop tape still keep the same. Because both hook and loop surface are nylon.

Another loop surfaces have been pulled apart, which greatly reduces the adhesion, because only the hook surface is nylon.

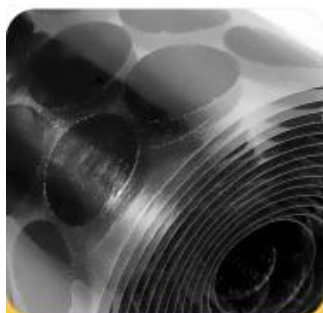
GOOD QUALITY PRODUCTS ALSO WITH GOOD ACCESSORIES



We used release paper in 120g thick and not easy to break



Other supplier used 100g or 80g it's easy to rot and deform



PET release film



PE release film



Single side silicon coated paper



Grashen release paper

ACCEPT CUSTOMIZE SHAPE AND COLOR FOR HOOK AND LOOP TAPE



PRODUCT USAGE



Sofa



Curtain



Window screen



Photo wall



Lamps



Car



Grinding machine



Fish tank brush



Cleaning appliances



helmet

PURCHASE NOTICE



Width	QTY/CTN		Dimensions & Gross Weight
	Roll/CTN	M/CTM	
16mm	60R	1500M	52x27x57 About 17kg/carton
20mm	48R	1200M	
25mm	40R	1000M	
30mm	32R	800M	
38mm	24R	600M	
50mm	20R	500M	
100mm	10R	250M	
110mm	10R	250M	

Packaging style



bulk packing



Paper card



Polybag

DO NOT USE IN THESE SURFACE



Wall of Dust



Rough wall



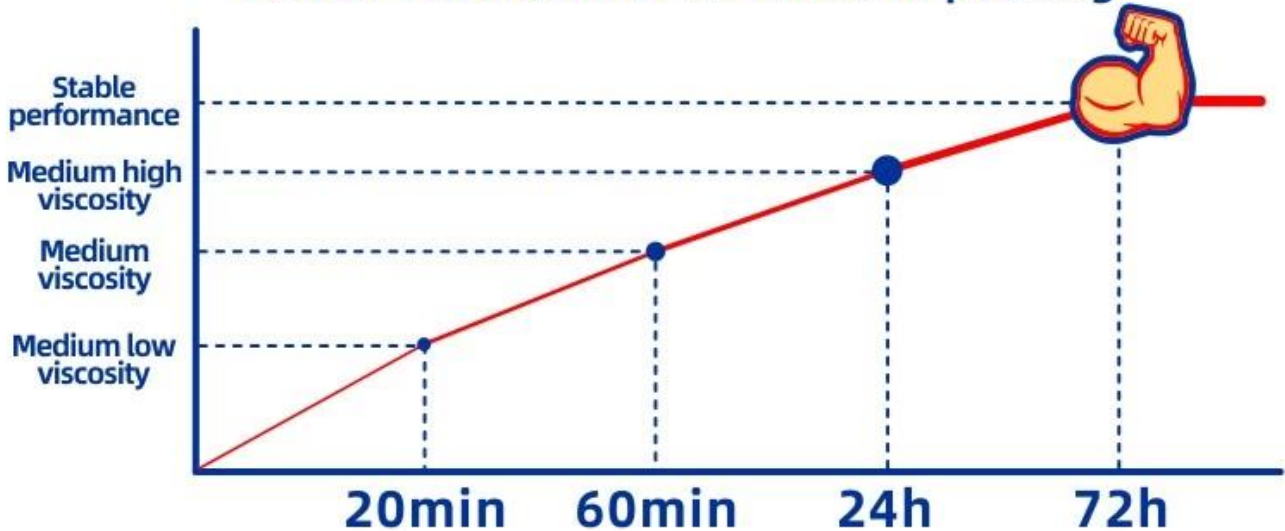
Rubber / silicone gel type



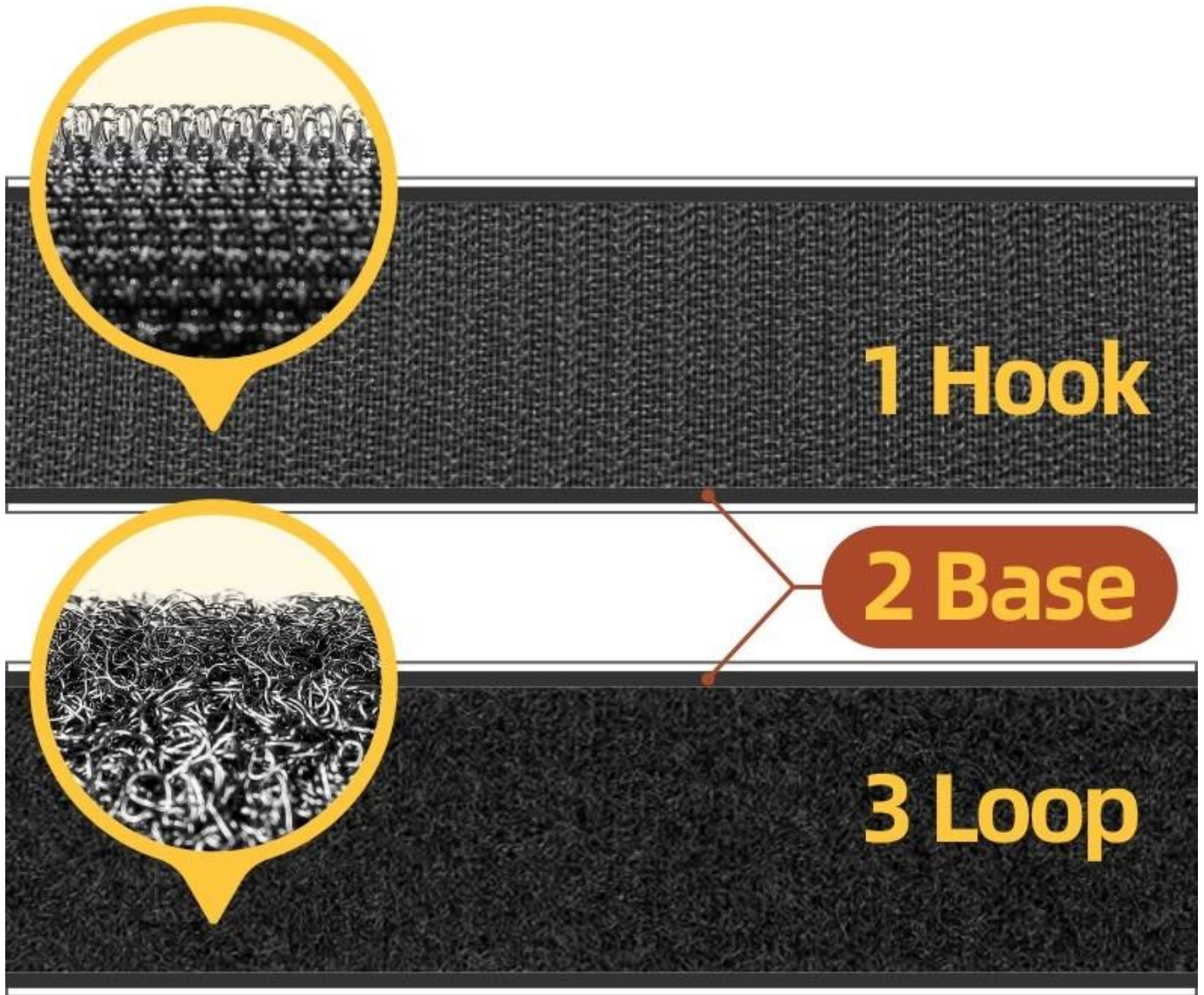
Lychee Leather

TIPS

Better results after 72 hours of pasting



Material selection



Quality	Grade A	Grade B	Grade C	Grade D
Material	1, 2, 3 Nylon	1, 3 Nylon	1 Nylon	1, 2, 3 Polyester
Peeling Strength	Strong	Great	General	Poor
Durability	Strong	Great	General	Poor
Texture	Strong	Great	General	Poor
Paste times	Most	Great	General	Less

Other customization

Structural characteristics



Sew-on hook



Sew-on loop



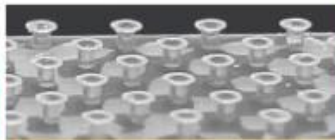
Un-napped Loop



Soft fabric loop



injection hook



mushroom hook



hook loop in same side



2 in 1 hook and loop tape

Hook and loop strap

Back-to-back rolls

Back-to-back tie

Buckle strap

Elastic buckle strap



We have 5000m²factory, our own factory
The REAL STRENGTH is to show the true face to you





Strict certification testing provides quality guarantee and **WORRY-FREE EXPORT**



We have achieved some inspection certification, such as ISO9001:2015, BSCI, SGS, TUV, etc. and have won the title of "Guangdong Province Credible Enterprise" for three consecutive years. In addition, we have obtained over 20 product patents and trademark, as well as 5 patent evaluation reports. A series of quality inspection reports provide quality guarantee and worry-free export.

CONTACT INFORMATION

TEL : +86 20 34992808
+86 18026363923
Web : www.homecommoditysupplier.com
E-mail : sales02@balance-china.com
Address : No.2 Shengyuan Street, Beiliu Ind Park, Dagang Town,
Nansha District, Guangzhou, Guangdong, China
Zip code: 511470